


Setting up AirTrack DP-1 Label Printer Using Ethernet

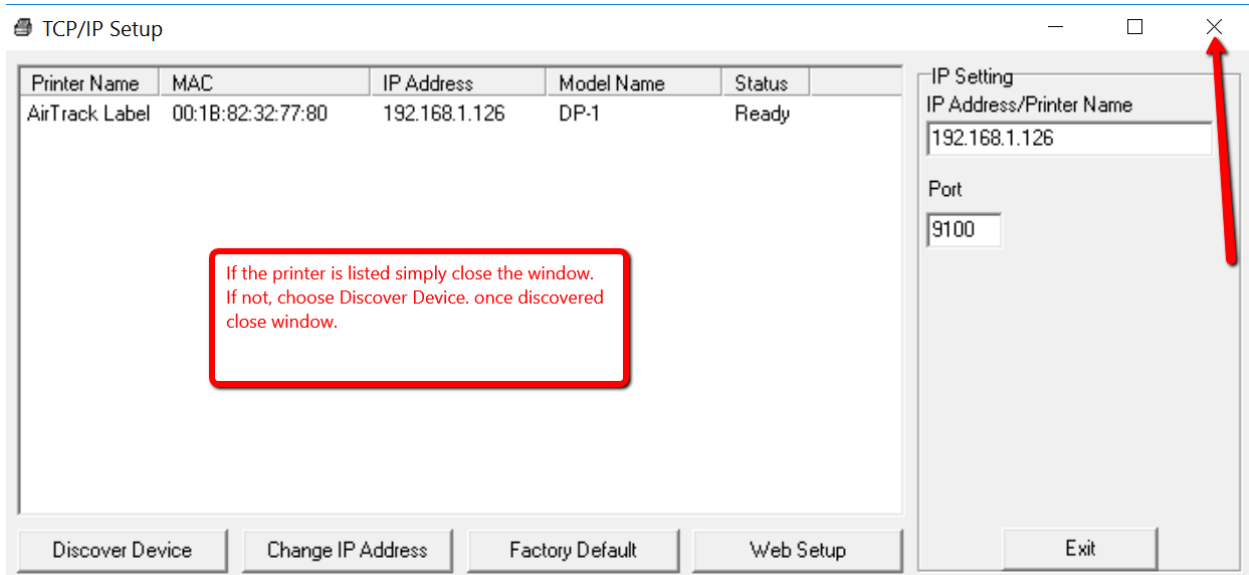
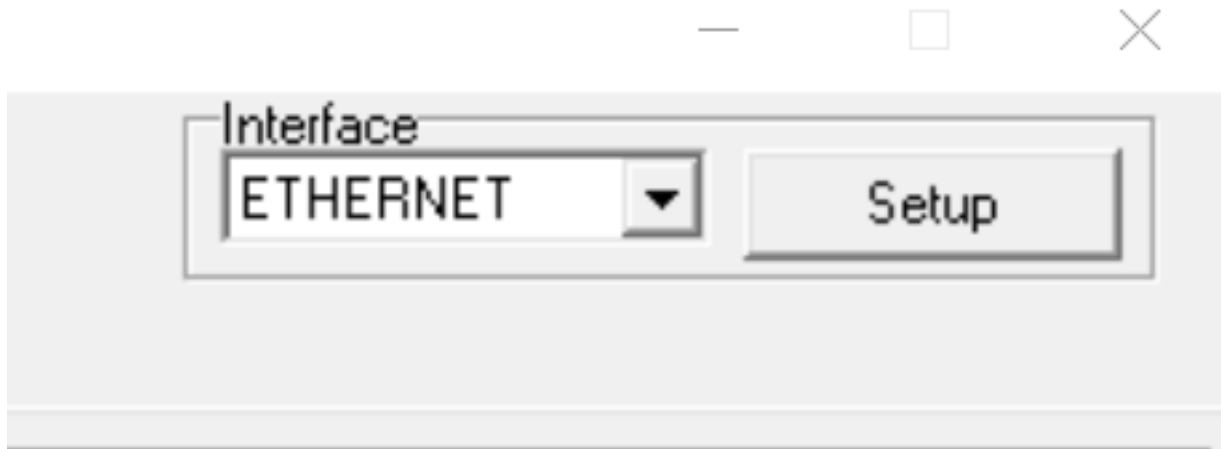
*Assuming you've completed setup of the ribbon and label roll

- Connect Power
- Connect Ethernet
- Turn on Printer
- [Download Diagnostic Tool](#) (Windows Only)
- Obtain a static ip from your isp
- Reserve the printer IP in your router settings
- Port forward 9100 to the assigned printer ip in your router settings
- In Flex, go to System Settings>Raw Printers. Open or create a new raw printer
- Set your raw printer

Name:	<input type="text" value="AirTrack DP-1"/>
Description:	<input type="text" value="Label Printer"/>
Location:	<input type="text" value="Select your location"/> 
Printer Language:	<input type="text" value="EPL2"/>
Printer Host Name:	<input type="text" value="Enter your static public ip here"/>
Raw Port Number:	<input type="text" value="9100"/>
Queue Name:	<input type="text" value="leave empty"/>
Job End Command:	<input type="text" value="leave empty"/>

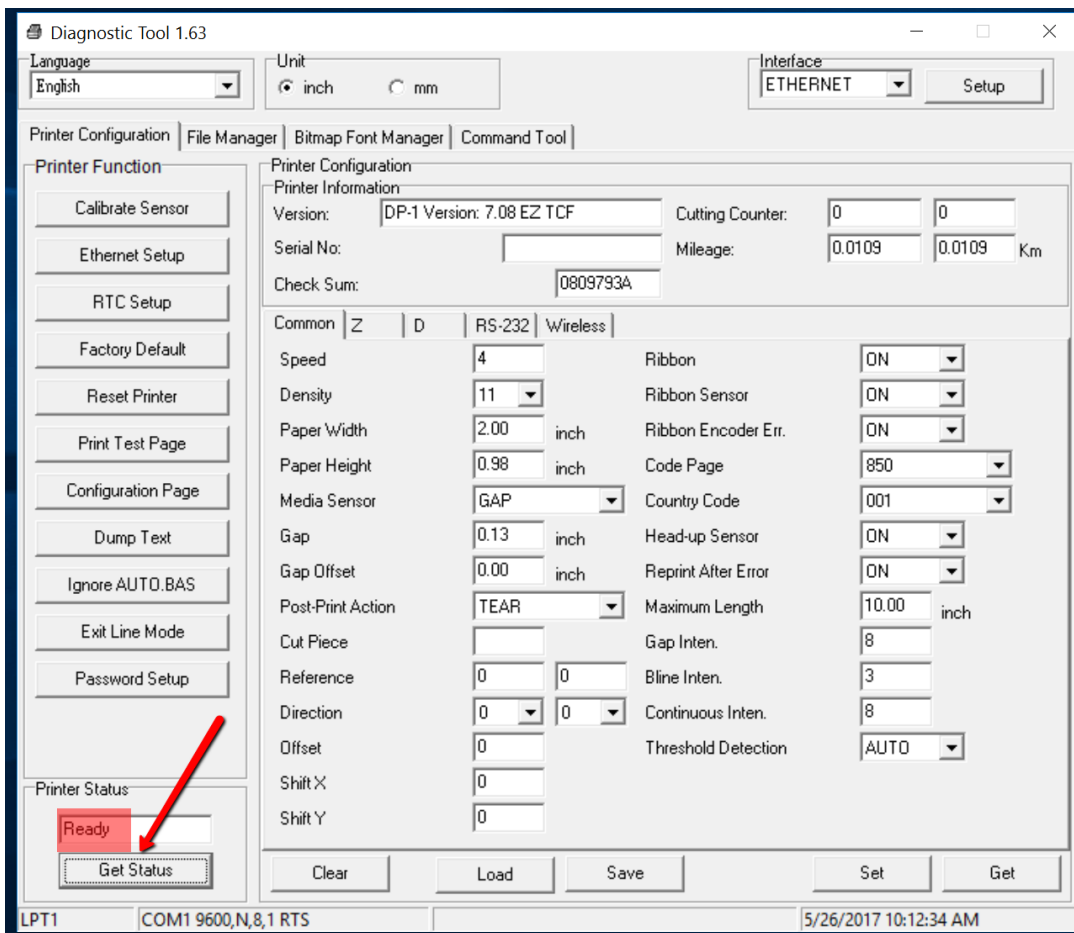
Thursday, May 25, 2017

- Go to System Settings>Raw Printer Templates. If you don't have a template loaded, request one from support@flexrentalsolutions.com
- Open Diagnostic Tool
- In the upper right (setup), choose Ethernet, then close the setup window

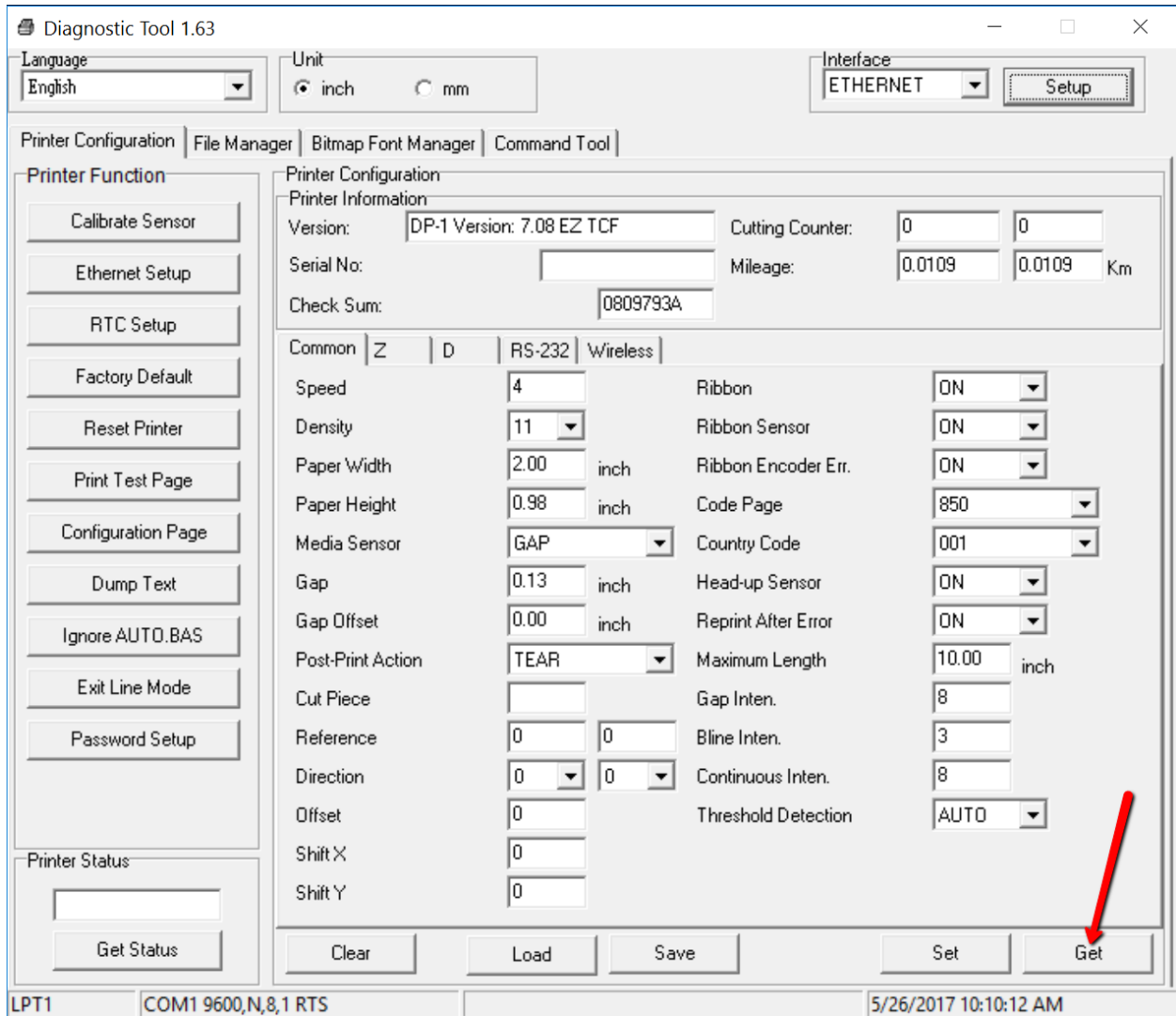


Thursday, May 25, 2017

- On the diagnostic tool main window, choose get status

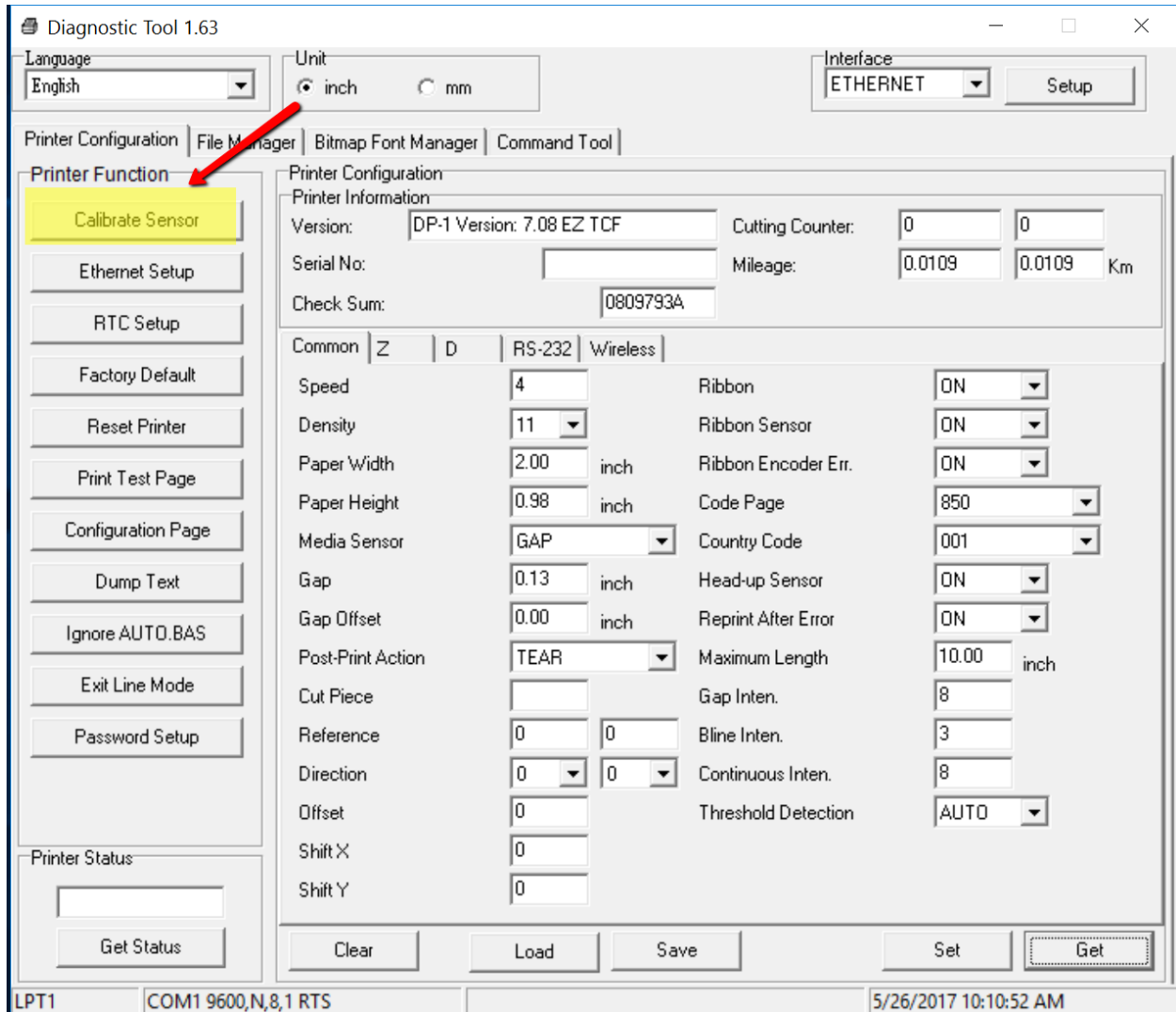


- Choose Get

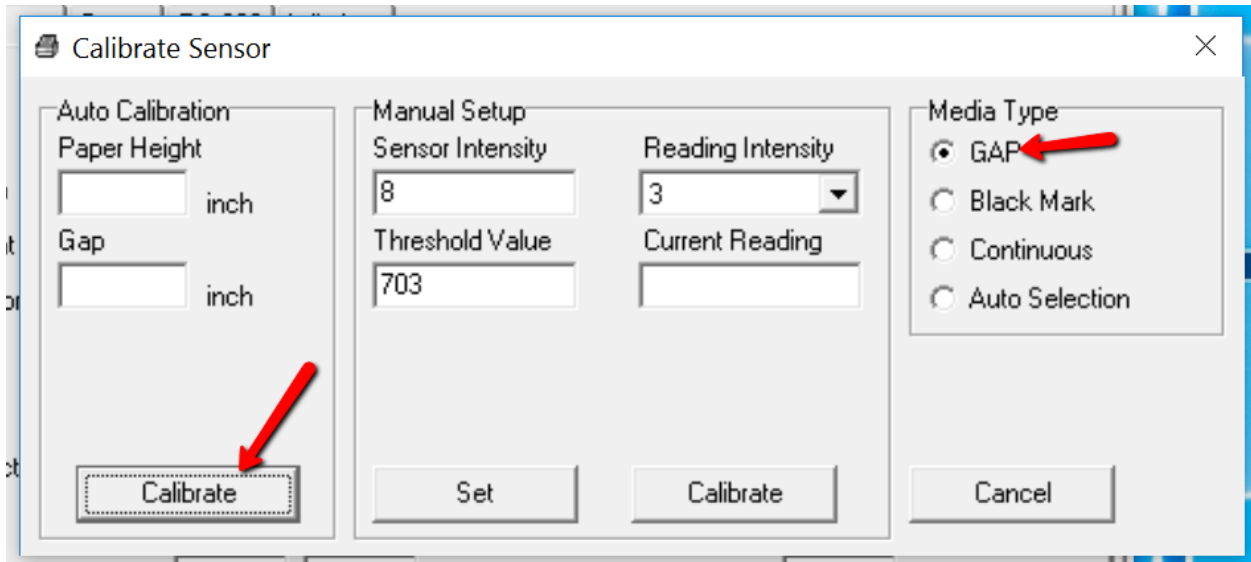


-

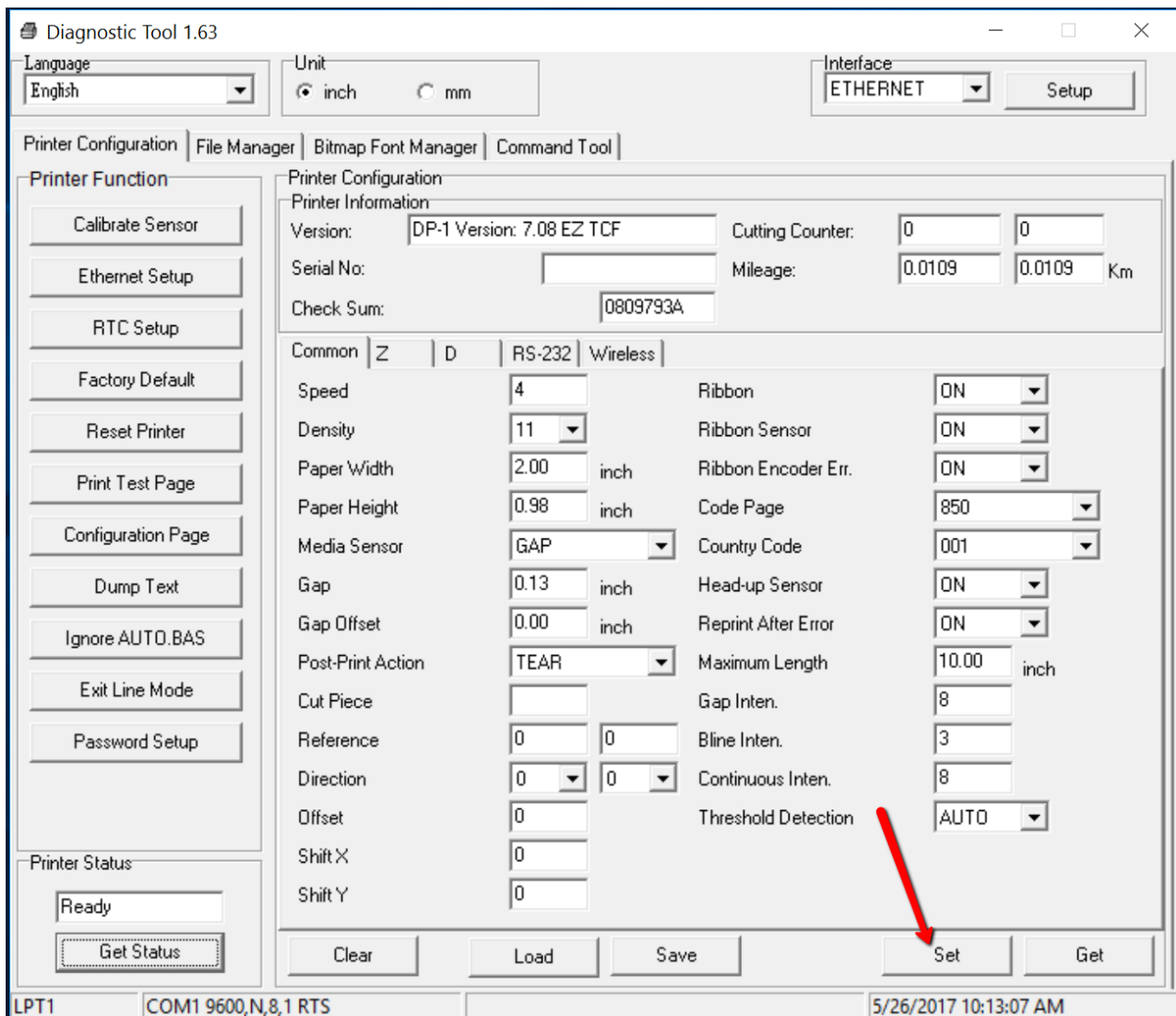
- Choose Calibrate Sensor



- Calibrate Sensor



- Set



Thursday, May 25, 2017

- END